

MIRAFLORES



CONCRETE TO WEST DAM



DREDGING IN CANAL NEAR MIRAFLORES LOCKS



MONITOR AT WORK



HYDRAULIC FILL WEST DAM



40 INCH SUPPLY PIPE FOR MONITOR

A hydraulic excavating plant is used south of the Miraflores locks. Four hydraulic pumps force the water through pipes, fitted with monitors, with a pressure of 130 pounds per square inch at the nozzles. These jets wash the material to sumps, from which centrifugal dredging pumps force the material to the desired destination.

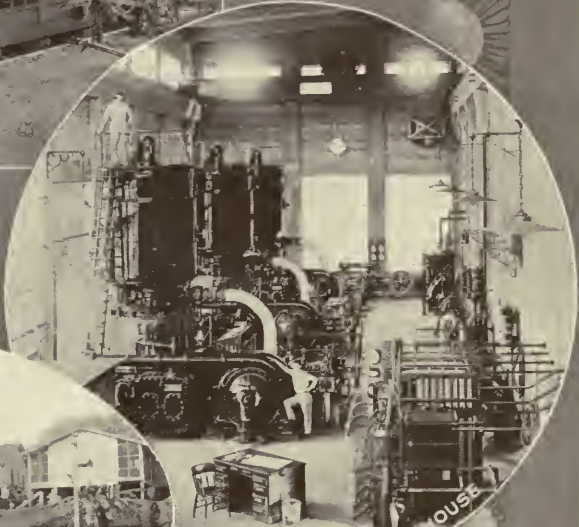
MIRAFLORES



POWER PLANT



MIRAFLORES TUNNEL UNDER CONSTRUCTION



INTERIOR OF POWER HOUSE



QUARTERS FOR EMPLOYEES



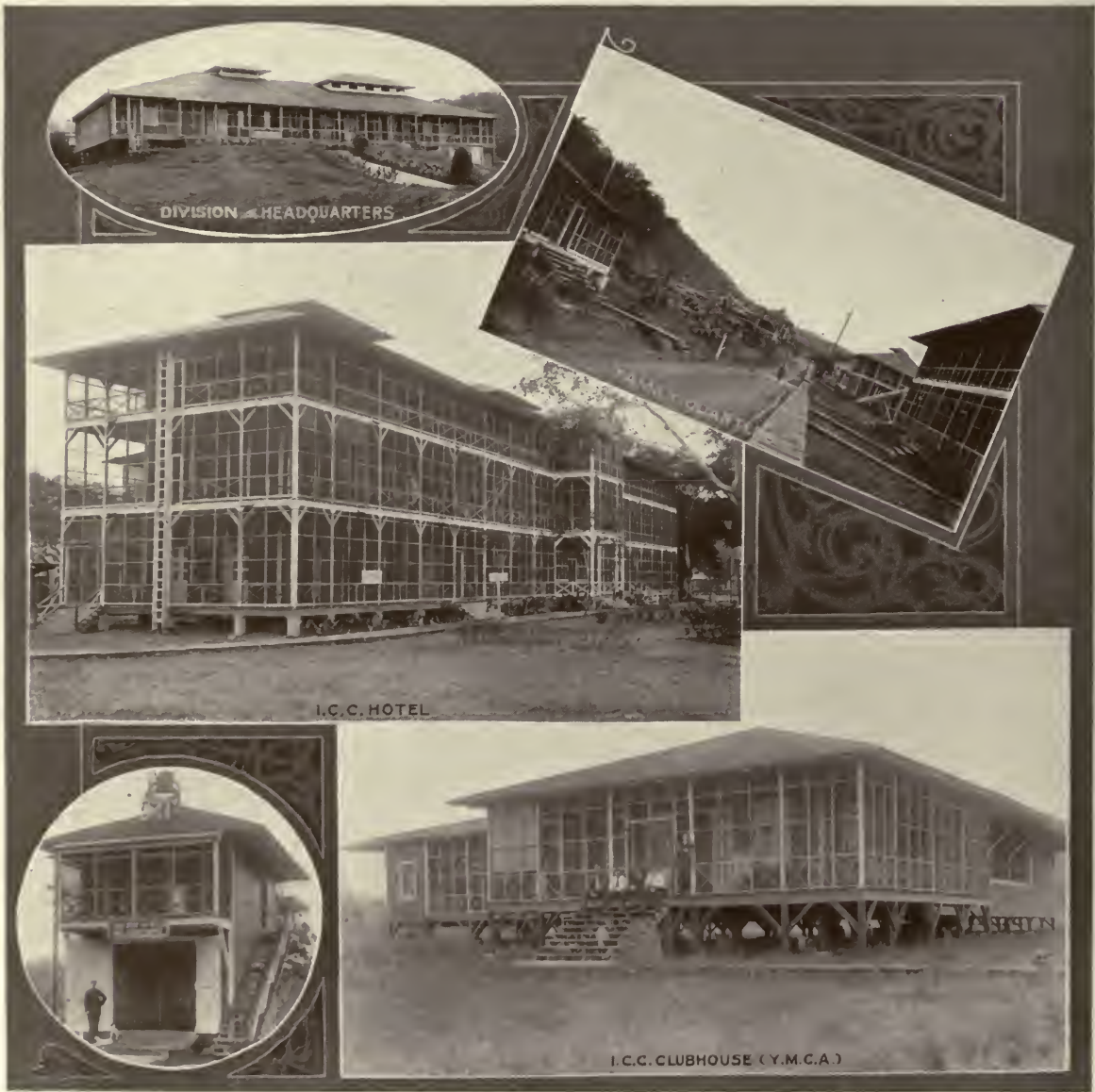
MIRAFLORES TUNNEL

Just south of Miraflores station the new Panama Railroad passes through a tunnel 736 feet long, the only one on the line. From the south end of Culebra Cut at Paraiso, the relocated line runs practically parallel with the Canal to Panama. The total cost of the new line is estimated at \$9,000,000. The lock machinery, dredging and other pumps in the Pacific Division are operated by electricity furnished from a central station.

∴ COROZAL ∴



GENERAL VIEW



DIVISION HEADQUARTERS

I.C.C. HOTEL

I.C.C. CLUBHOUSE (Y.M.C.A.)

This is the headquarters for the Division Engineer of the Pacific Division, which extends from Pedro Miguel to deep water in the Pacific Ocean. About sixty American families reside in Corozal, and there is only one principal street, called Davis Avenue. The hotel was the first one built and operated by the Americans.

SANITATION



CLEANING DRAINAGE DITCH



METHOD OF SUBSOILING



MOSQUITO BREEDING PLACE



METHOD OF OILING

Elimination of the mosquito has brought about the elimination of yellow fever and a reduction in the malaria sick rate. Every square foot of swamp was a breeding place for mosquitoes. Draining swamps, burning brush, subsoiling and building concrete culverts are some of the methods used in the prevention of mosquito breeding.

MACHINERY



TRACK SHIFTER



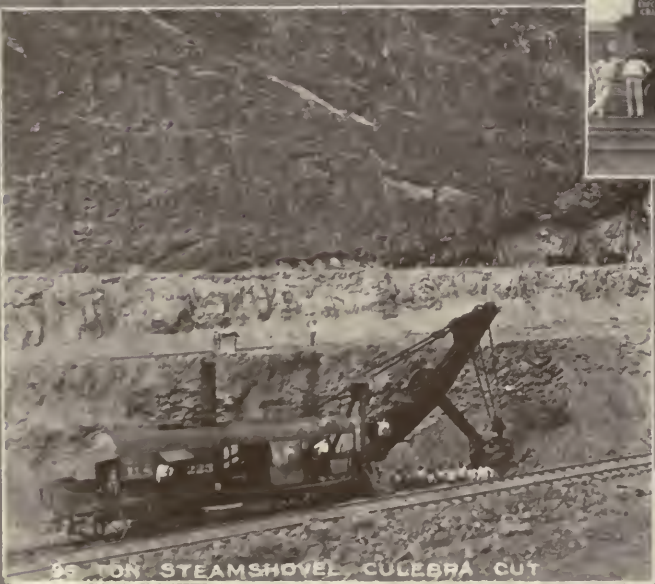
REVOLVING STEAMSHOVEL



PORTABLE CONCRETE MIXER



100 TON WRECKING CRANE



25 TON STEAMSHOVEL, CULEBRA CUT



CHANNELING MACHINE

Some of the various kinds of machinery used in the canal work. Tracks are shifted by a device patented by W. G. Blerd, formerly general manager of the Panama Railroad. It raises the track and ties by one motion so as to clear the ground, and by another motion pulls it sidewise. The throw is from 3 to 9 feet.

:-: ANCON :-:



Ancon hill in 1907, before operations in the quarry, and the present time in comparison. At the foot of the hill, facing the Balboa road, stood "La Folie Dingler," the house built by M. Dingler, one of the chief engineers in the days of the First French Company. It was never occupied by him but was used by the Americans as a quarantine station; afterwards demolished to make room for the Ancon hill quarry operations.

:-: ANCON :-:



Partial view of Ancon from the Tivoli Hotel. Administration Building in the distance.



View from Ancon Hill, showing the bathing beach in the distance.

Ancon is in the Canal Zone and is divided from Panama by a street. A great many of the houses are built on the side of the hill. The scenery surrounding is beautiful and the conditions homelike.

:-: ANCON :-:



ADMINISTRATION BUILDING



METEOROLOGICAL STATION AND OBSERVATION TOWER



SEISMOGRAPH ROOM



POST OFFICE

The Administration Building is headquarters of the Civil Government of the Canal Zone, and Department of Sanitation. A meteorological station is located at Ancon, which houses a set of seismograph instruments. Observation tower on right. There are twelve rainfall stations on the Canal Zone.

:-: ANCON :-:



ANCON HOSPITAL FROM TIVOLI HOTEL



WARDS 11 AND 12



AMONG THE WARDS



ASYLUM FOR INSANE

Ancon Hospital is world-famed, and the grounds are among the most beautiful in existence. The buildings which comprise it were nearly all erected by the French. About \$1,000,000 is spent annually in the care of the sick among the employees.

:-: ANCON :-:



AVENUE OF ROYAL PALMS



THE WINDING ROADS



FAN PALM



UPPER PART OF GROUNDS



INSIDE THE MAIN ENTRANCE

The hospitals are under the control of the Sanitary Department. The sick rate of laborers on the Isthmus is less than that of similar bodies of men in other parts of the world. The death rate of American employees is as small as it would be if they were living in New York City.

ANCON



CORNER OF PARLOR



TIVOLI HOTEL



LOBBY



DINING ROOM

The Tivoli Hotel is maintained by the Subsistence Department, thus affording it the advantage of a very complete cold storage system, being supplied with the choicest meats, fruits and vegetables direct from the States. It is equipped with all modern conveniences, and is thoroughly first-class. It was opened by ex-President Roosevelt in November, 1907.

:=: ANCON :=:



BEDROOM



KITCHEN



DINING ROOM



PARLOR

Married quarters are furnished free by the Government, and fuel, light and water supplied without charge. These allowances amount to about \$40.00 per month. Assignments for quarters are made by the District Quartermaster, based on date of application, rate of salary, and date of entry in the service.

:-: ANCON :-:



POLICE STATION



ANCON FIRE STATION



SCHOOL BUILDING



ST. JAMES CHURCH



TIVOLI FIRE STATION



CATHOLIC CHAPEL

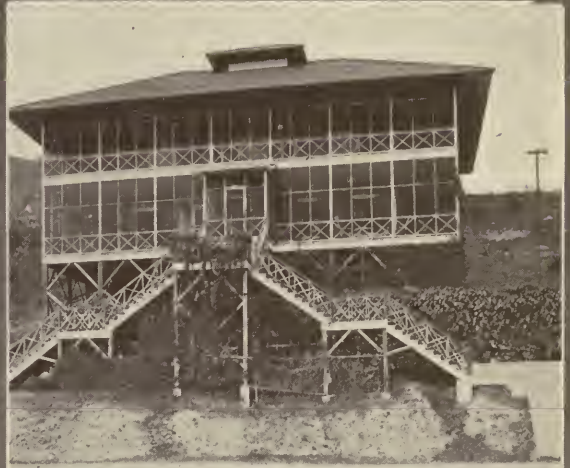


NIGHT DEPT.

Ancon has two fire companies. No steamers are used, as the water pressure is sufficient. The establishment of schools and churches is an aid in making life satisfactory on the Isthmus. The Canal Commission pays the salaries of the chaplains.



DOCTOR'S QUARTERS ANCON HOSPITAL



ONE FAMILY QUARTERS



TYPE OF OFFICIAL'S QUARTERS



BACHELOR QUARTERS ANCON HOSPITAL



INTERIOR BACHELOR'S QUARTERS



DISPENSARY

Owing to the necessity of building on the side of the hill at Ancon, many steps are required at some of the quarters, as shown in one of the pictures above. Usually more level sites are procured for quarters. The houses, with the surrounding shrubbery, make a beautiful scene.